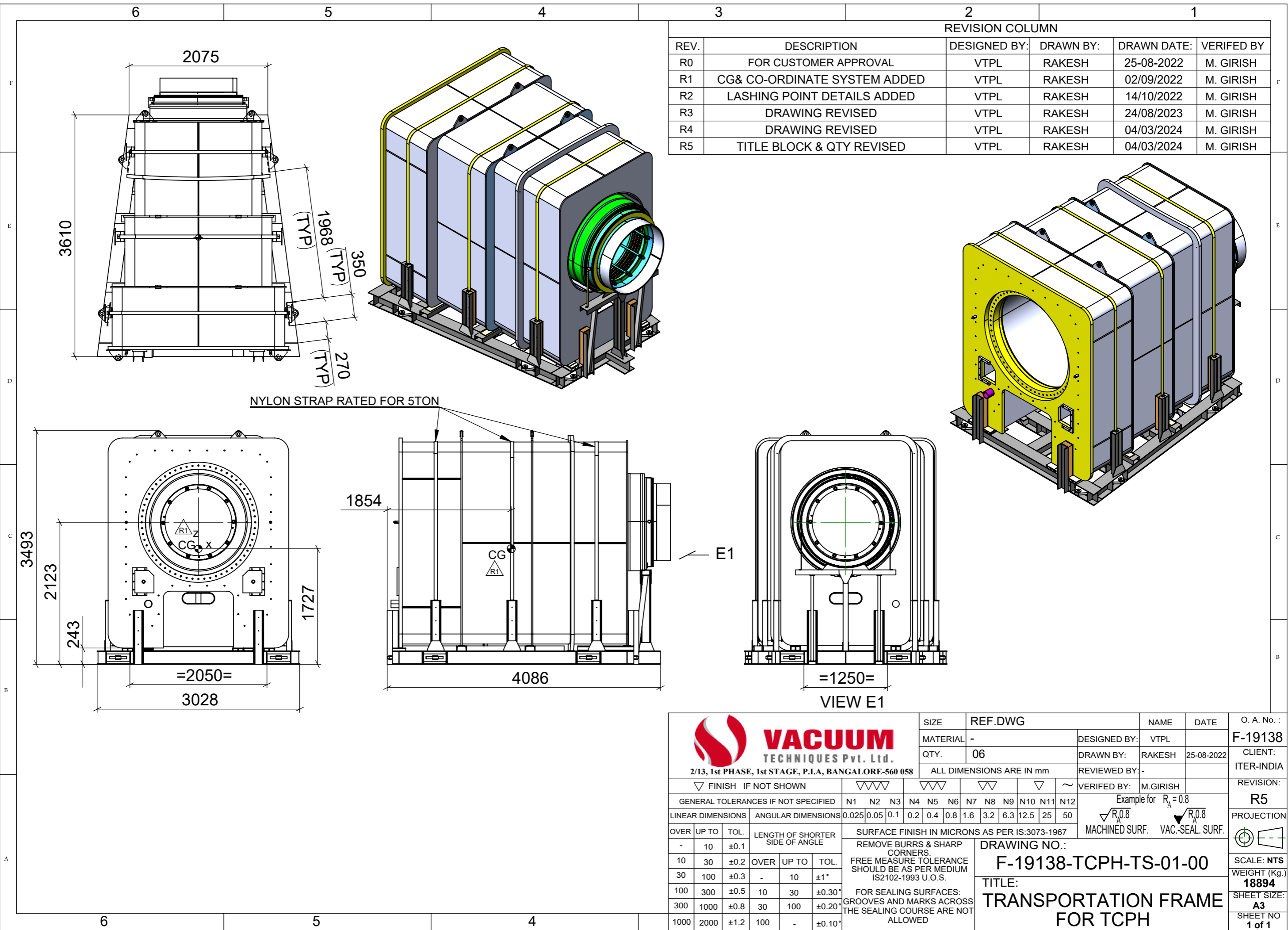


THIS DESIGN INFORMATION IS THE PROPERTY OF VACUUM TECHNIQUES PVT. LTD. AND SHOULD NOT BE GIVEN OR HANDED OVER OR DIVULGED TO ANY OTHER PERSON WITHOUT THE EXPRESS PERMISSION OF THE COMPANY IN WRITING. THE MATTER IN GIVEN ON THIS DRAWING IS TO BE TREATED AS STRICTLY CONFIDENTIAL



3

2

1

REVISION COLUMN

REV.	DESCRIPTION	DRAWN BY:	DRAWN DATE:	VERIFIED BY
R0	FOR CUSTOMER APPROVAL	RAKESH	25-08-2022	M. GIRISH
R1	PART NO:F-19138-TCPH-TS-01-1G&H ADDED	RAKESH	14/10/2022	M. GIRISH
R2	PART NO:F-19138-TCPH-TS-01-1I&1O ADDED	RAKESH	24/08/2023	M. GIRISH
R3	PART NO:F-19138-TCPH-TS-01-1P&1Q ADDED	RAKESH	04/03/2024	M. GIRISH
R4	DRAWING NO. & TITLE BLOCK NAME REVISED	RAKESH	12/04/2024	M. GIRISH

STAINLESS STEEL CLADDING

DETAIL D9

DETAIL D8

NOTE:

STRUCTURE SHALL BE PAINTED WITH TWO COAT OF EPOXY PRIMER FOLLOWED BY ONE COAT OF EPOXY PAINT

17	F-19138-TCPH-TS-01-1Q	C-CHANNEL-8	IS 808 :1989	ISMC-150,475L	1	8.73
16	F-19138-TCPH-TS-01-1P	C-CHANNEL-7	IS 808 :1989	ISMC75,1291L	2	8.48
15	F-19138-TCPH-TS-01-1O	GUSSET-2	IS:2062 Gr.B	181x196x10THK	24	2.09
14	F-19138-TCPH-TS-01-1N	BOTTOM SUPPORT_2	IS:2062Gr.B	REF.DWG	2	32.48
13	F-19138-TCPH-TS-01-1M	C-CHANNEL-6	IS 808 :1989	ISMC-150,427L	1	7.68
12	F-19138-TCPH-TS-01-1L	C-CHANNEL-5	IS 808 :1989	ISMC-150,562L	1	10.16
11	F-19138-TCPH-TS-01-1K	C-CHANNEL-4	IS 808 :1989	ISMC-150,562L	1	11.61
10	F-19138-TCPH-TS-01-1J	SUPPORT-3	IS-2062 Gr. B	REF.DWG	3	4.11
9	F-19138-TCPH-TS-01-1I	SUPPORT-2	IS-2062 Gr. B	REG.DWG	1	179.69
8	F-19138-TCPH-TS-01-1H	PLATE	IS:2062 Gr.B	110x350Lx12THK	8	3.65
7	F-19138-TCPH-TS-01-1G	LUG	IS:2062 Gr.B	152x254Lx36THK	8	7.64
6	F-19138-TCPH-TS-01-1F	GUSSET-1	IS:2062 Gr.B	150x250Lx8THK	6	1.90
5	F-19138-TCPH-TS-01-1E	C-CHANNEL-3	IS 808 :1989	ISMC-150,975L	1	20.93
4	F-19138-TCPH-TS-01-1D	BOTTOM SUPPORT_1	IS-2062 Gr. B	REF.DWG	1	38.80
3	F-19138-TCPH-TS-01-1C	C-CHANNEL-2	IS 808 :1989	ISMC-150,427L	1	7.66
2	F-19138-TCPH-TS-01-1B	C-CHANNEL-1	IS 808 :1989	ISMC-150,2570L	1	52.78
1	F-19138-TCPH-TS-01-1A	FRAME	IS 808 :1989	REF.DWG	1	1082.51

ITEM NO.	PART NUMBER	DESCRIPTION	MATERIAL	SIZE	QTY.	WT/KG
----------	-------------	-------------	----------	------	------	-------

VACUUM

TECHNIQUES Pvt. Ltd.

2/13, 1st PHASE, 1st STAGE, P.L.A, BANGALORE-560 058

SIZE

REF.DWG

MATERIAL

-

QTY.

01

DRAWN BY:

RAKESH

25-08-2022

REVIEWED BY:

VERIFIED BY:

M.GIRISH

ALL DIMENSIONS ARE IN mm

Example for $R_A=0.8$

$\sqrt{R_{0.8}}$

MACHINED SURF.

VAC-SEAL SURF.

DRAWING NO.:

F-19138-TCPH-TS-01-00(C)

TITLE:

TRANSPORTATION SCHEME FOR TCPH TYPE-C

GENERAL TOLERANCES IF NOT SPECIFIED

N1 N2 N3

N4 N5 N6

N7 N8 N9

N10 N11

N12

▽ FINISH IF NOT SHOWN

▽▽▽

▽▽

▽▽

▽

▽

~

LINEAR DIMENSIONS

OVER UP TO TOL.

0.5 3 ±0.2

3 6 ±0.3

6 30 ±0.5

30 120 ±0.8

120 400 ±1.2

400 1000 ±2

1000 2000 ±3

2000 4000 ±4

ANGULAR DIMENSIONS

LENGTH OF SHORTER SIDE OF ANGLE

OVER UP TO TOL.

- 10 ±1°30'

10 50 ±1°

50 120 ±0°30'

120 400 ±0°15'

OVER 400 ±0°10'

SURFACE FINISH IN MICRONS AS PER IS:3073-1967

REMOVE BURRS & SHARP CORNERS.

FREE MEASURE TOLERANCE SHOULD BE AS PER COARSE ISO2768

FOR SEALING SURFACES: GROOVES AND MARKS ACROSS THE SEALING COURSE ARE NOT ALLOWED

O. A. No. :

F-19138

CLIENT:

ITER-INDIA

REVISION:

R4

PROJECTION

SCALE: NTS

WEIGHT (Kg.)

1969.84

SHEET SIZE:

A2

SHEET NO

1 of 1